

Telraam

Telraam, the sensor



V1



S2

Telraam, a sensor in the window



A sensor in the window with a camera that counts continuously (in daylight) and is able to distinguish **multiple modes, direction** and **speed** (*):

- pedestrians
- bikes
- cars *
- motorcycles
- vans
- trucks
- buses

Uses of the Telraam S2



Compact

All-in one & elegant design
LCD interface

Easy to install

10' installation process
Plug & play

AI generated counts

Ability to improve through
machine learning

Night counts *

Counting motorised
vehicles in darkness

More traffic data

Expanding to more modes
15' typical traffic

* night counting functionality in development & testing



In partnership with citizens

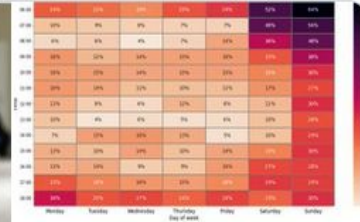
Telraam, the citizen science service provider



Telraam @TelraamTelraam · Oct 10, 2021

Traffic volumes around schools are a major concern for citizens in Dublin. The Dublin case study is providing traffic and air quality monitors to local schools to help them collect objective measurements outside the school gate. [@WecountH](#)

we-count.net/news/dublin-sc...



In partnership with citizens

Possibility to set up networks of grassroots (NGOs) and top-down (village - district - city - national bodies) measurement networks

- ✓ Installation possible in any home (that meets the technical requirements).
- ✓ Gives citizens a key role, involving them in the process (public engagement + citizen science)
- ✓ Objective tool to support needs and validate perceptions ("*There are too many cars here in the morning...*" But what does "too many" mean, and is it really not in line with the infrastructure and traffic plans?)
- ✓ Provides the opportunity to assess and monitor conditions at local level over the long term

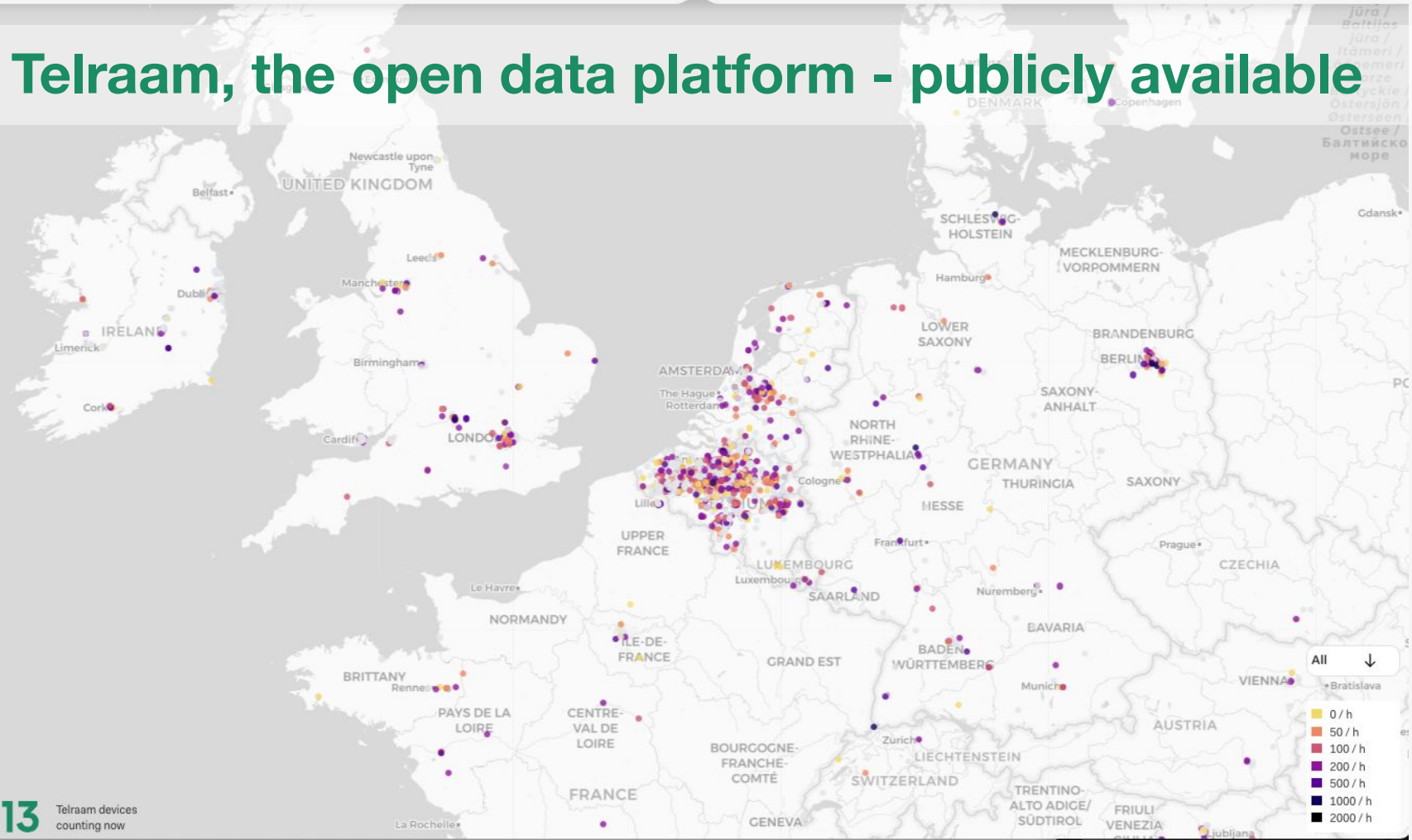




Telraam, the open data platform



Telraam, the open data platform - publicly available



```
{
  "status_code": 200,
  "message": "ok",
  "report": [
    {
      "segment_id": 348917,
      "date": "2020-10-30T07:00:00.000Z",
      "interval": "hourly",
      "uptime": 0.73,
      "heavy": 78.0821917808,
      "car": 619.1780821918,
      "bike": 263.0136986301,
      "pedestrian": 72.602739726,
      "heavy_lft": 52.0547945205,
      "heavy_rgt": 26.0273972603,
      "car_lft": 202.7397260274,
      "car_rgt": 416.4383561644,
      "bike_lft": 156.1643835616,
      "bike_rgt": 106.8493150685,
      "pedestrian_lft": 41.095890411,
      "pedestrian_rgt": 31.5068493151,
      "direction": 1,
      "timezone": "Europe/Brussels",
      "car_speed_hist_0to70plus": [
        15.9292035398,
        44.2477876106,
        29.203539823,
        5.9734513274,
        1.5486725664,
        0.4424778761,
        0.6637168142,
        1.9911504425
      ],
      "car_speed_hist_0to120plus": [
        5.7522123894,
        10.1769911504,
        19.6902654867,
        24.5575271239
      ]
    }
  ]
}
```

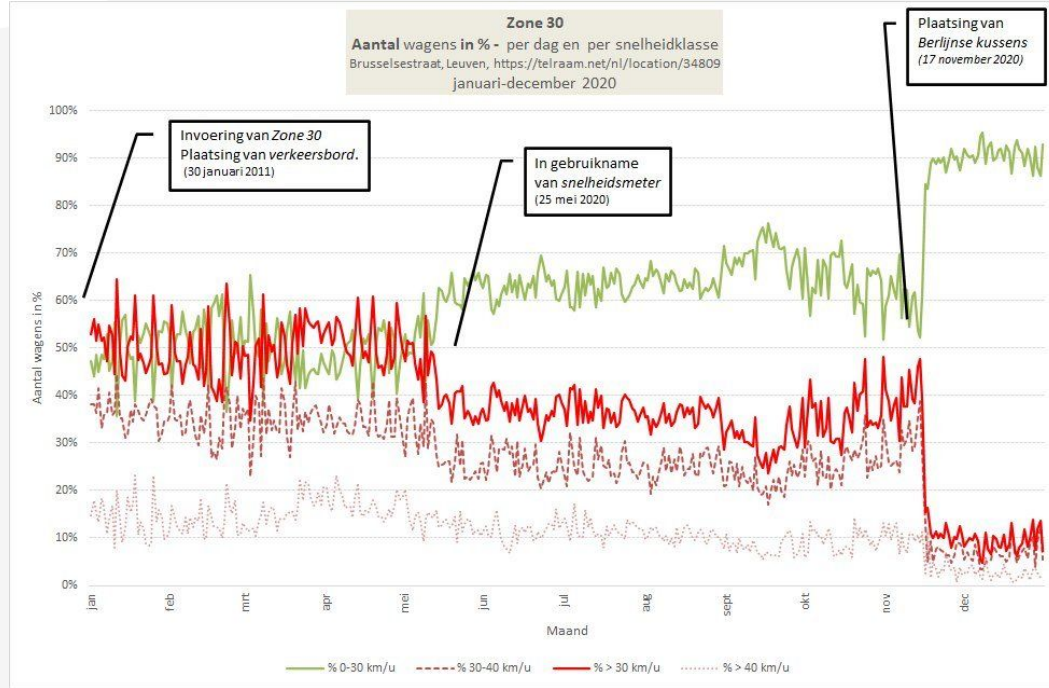
Telraam, the open data platform (API) - publicly available



Case studies

Traffic speed reduction after Telraam

(speed below and above 30 km/h %)

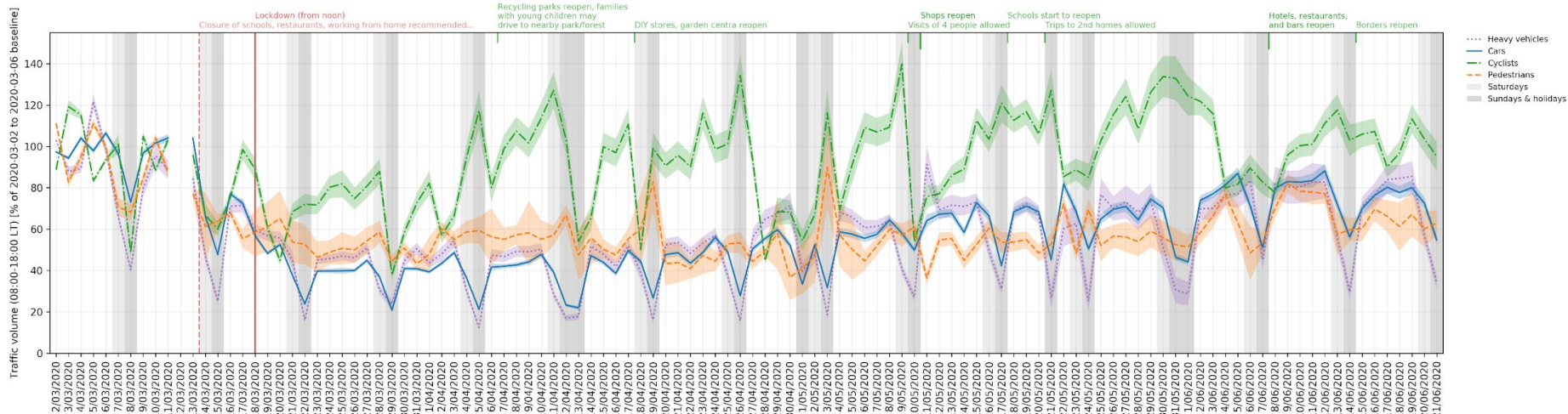


Impact of:

- (a) placement of digital speed sign
- (b) placement of Berlin cushion on average speed in zone 30.

Covid-19 lockdown impact on Belgian traffic

(analysis of data exported with API)



Source: Péter I. Pápics - Transport & Mobility Leuven - telraam.net

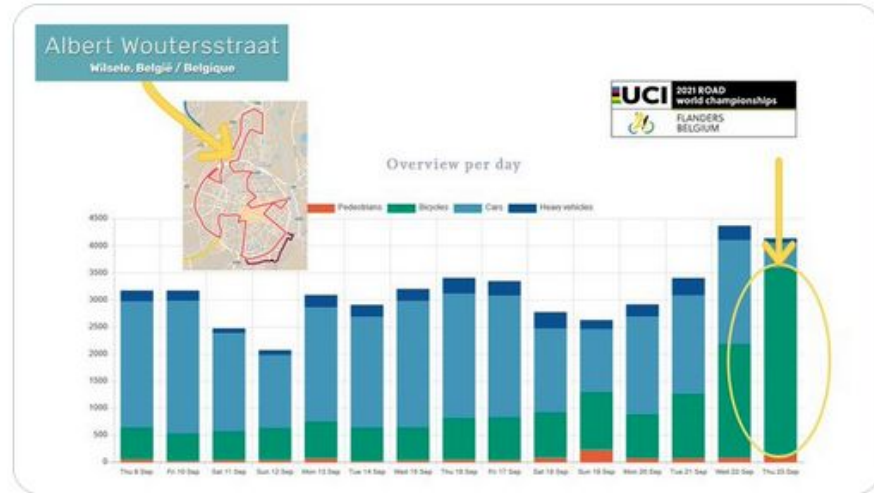
World cycle championship (Leuven, BE)

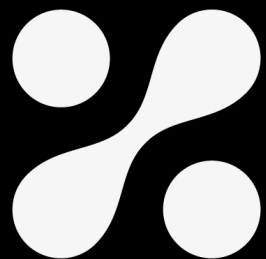


Telraam @TelraamTelraam · 23 sep.

De wielervliefhebbers zijn deze namiddag aan de 'Flanders 2021 Ride Leuven' begonnen en dat zorgt voor 10 keer zoveel fietspassanten als op een normale donderdag in de Albert Woutersstraat in Wilsele. Volg het zelf via onderstaande link 📍

telraam.net/en/location/90...





Telraam

Any questions:
info@telraam.net

Diestsesteenweg 71
B-3010 Leuven

www.telraam-api.net
www.telraam.net