

Empowering citizens for changing AI innovation: a practical approach and toolkit

Karen Verstraelen
karen@scivil.be

The amai!-team



- **Scivil**: The Flemish center for citizen science
 - Participatory approach
- **Knowledge centre Data & Society**
 - Domain knowledge: societal aspects of AI

Funded by the **Flemish Government** (Economy, Science and Innovation), as part of AI Flanders programme



Scivil



Vlaamse
overheid

Main goals

Insight: How is AI part of our lives?

- Science communication

Ideas: What do you want AI to be used for (and in what ways)?

- Citizen science

Impact! We give consortia a chance to make citizens' ideas come true

- Funding call
- Projects with a citizen science approach



Target audiences

People who are not primarily interested in AI, but who are deeply concerned with current societal challenges


Societal
implementers


Civil society
organisations


Researchers


Policy makers

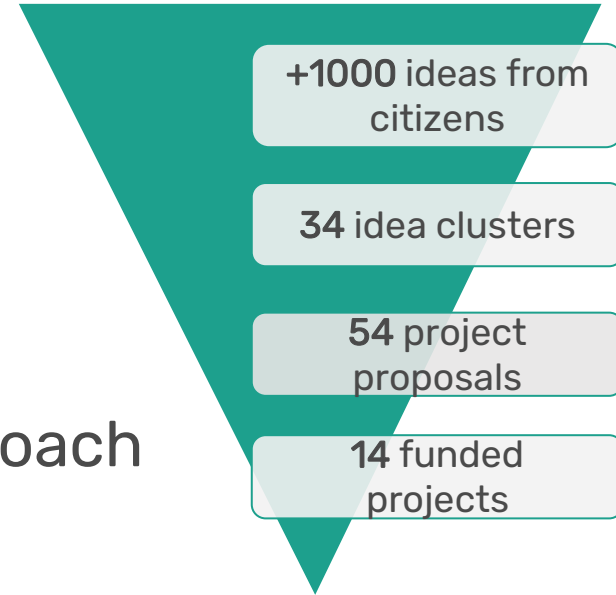

AI-professionals



4 phases

- 1. Collecting research questions
- 2. Co-creating solutions
- 3. Open call for projects
- 4. Developing solutions with CS approach

→ Citizens involved in every phase



1. Collecting research questions

- Citizens share their ideas for AI-applications

Jullie bijdragen

Recent

Populair

Voorstel van dieet voor diabetes patient

Onderhuidse glucose chip uitbreiden met monitoren van aan te raden voeding in functie van bloedwaarden. Eventueel die voeding al voorstellen voor boodschappenlijst.

Els V.

♥ 1 < 0 💬 0

Log in om te stemmen

lees meer

Kan AI er voor zorgen dat je als automobilist via alleen maar groene lichten je bestemming bereikt?

Alle verkeerslichten en auto's zouden geconnecteerd moeten zijn. Verkeerslichten houden rekening met het verkeer dat hun richting uitkomt

Tim L.

♥ 0 < 0 💬 0

Log in om te stemmen

lees meer

Een automatische secretaresse die mijn mailbox kan beheren

mss kan het systeem woorden herkennen en beantwoorde mails zo sorteren in de mappenstructuur

Tine W.

♥ 0 < 0 💬 0

Log in om te stemmen

lees meer



Mobility



Climate



Health

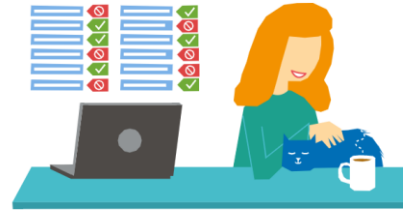


Work

amai!

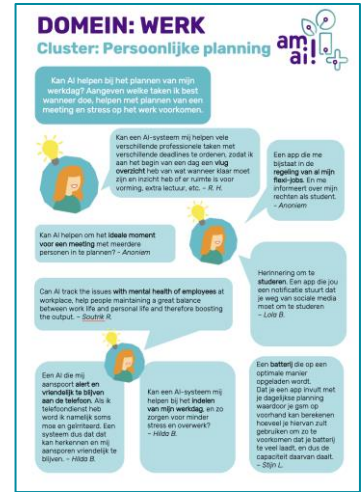
1. Collecting research questions

- Online platform
 - Information on AI through stories
 - Quiz: How AI is your visit to the supermarket?
- Broad communication to general public
 - Social media
 - Public broadcaster: radio and online
 - National newspaper



2. Co-creating solutions

- Clustering of ideas
- Co-creation sessions
 - Bringing together citizens, experts in societal challenges and AI-experts
 - Defining scope of issues and requirements for AI-solutions



3. Open call for projects

- Funding call open for consortia consisting of:
 - Non-profits and civil movements
 - Local governments
 - Knowledge institutions
 - IT-companies
- Selection of projects
 - Jury of experts
 - Citizen's vote
 - Jury of citizens
 - Online vote
- 3-5 projects funded/year



4. Developing solutions with CS approach

- Citizens involved in development
 - E.g. focus groups, collecting data, annotating data...
- Regular intervision with support on CS and human centred AI
- Communication on process through website and monthly newsletter



Translation of sign language through video



A chatbot to practice Dutch for students with a foreign mother language



A tool to make doctor's reports more comprehensible



Mapping bee populations and specific vegetation



A tool to plan routes for visually impaired people

Activities

- 2021: brainstorm sessions and co-creation sessions
 - Mainly online (covid)
- From 2022: more focus on offline events
 - Information sessions
 - Workshops
 - Idea booth at events
 - Train-the-trainer
 - ...
- The amai! card game
 - From 8+
 - At home or in classroom



Interactive wall

- Quiz: “AI of ni” (“AI or not”)?
- At big events
 - E.g. science festivals and fairs
- Roadshow
 - With public broadcaster



How to engage people?

2021

- Online (covid-19)
- **Accessible information and fun formats to spark curiosity**
- How?
 - Link to daily lives of the citizens
 - Nice visuals, accessible stories



2022

- In real life 😊
- **Go where the people are**
- **Guide citizens towards sharing their idea for AI**
- How?
 - Dialogue & guided conversation
 - Workshops and lectures
 - Interactive wall at festivals

2023

- In schools
- **Link to educational goals**
- How?
 - Educational material
 - Teach the teacher workshops
 - Free AI card game for schools and libraries

2024

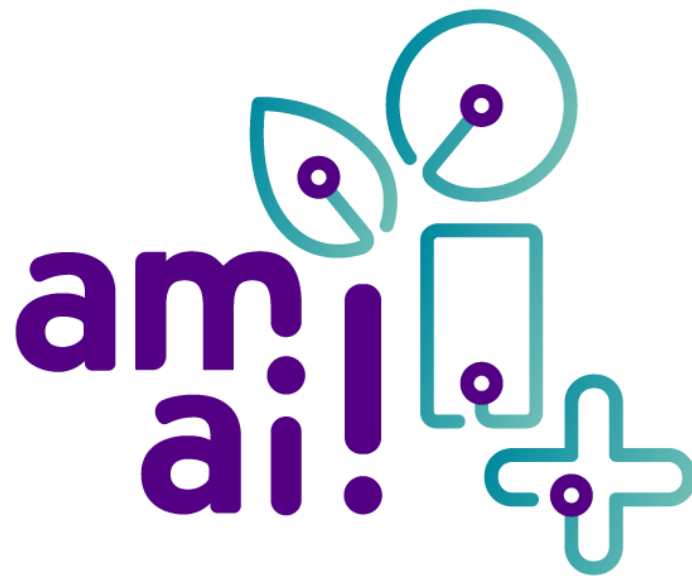
- Low-literate groups
- **Anyone in the streets**
- How?
 - Work together with organisations working with target group
 - Roadshow with public broadcaster
 - Theatre show in the streets

Toolkit



- www.amai-toolkit.vlaanderen
 - In English & Dutch
- Methodology of amai! project
- Inspiration for similar projects in other regions, or on other themes than AI

Karen Verstraelen
karen@scivil.be



Karen Verstraelen
karen@scivil.be

